

Tahiti, Society Islands

Facilities	
Baby bed	✓
Baby sitting	On Request
Boutiques	✓
Business Centre	✓
Dive Centre	
Electricity	220V-110V
Helipad	
Ice machines	✓
Infinity Pool	✓
Internet access	✓
Laundry service	✓
Spa	massage room only
Transit rooms	✓
Room Facilities	
Air Conditioning	✓
Balcony	✓
Bathtub	
Cable TV - Movie Channel	✓
CD Player	
Ceiling Fan	
Coffee / Tea Facilities	✓
Connecting Rooms	Superior Mountain / Garden View
Direct Access to Lagoon	
Glass Bottom Table	
Hair Dryer	✓
Internet access	✓
Mini Bar	✓
Private Jacuzzi	
Safety box	✓
Shower	✓
Telephone	✓
TV	plasma TV screen
Free Activities	
Aquagym	✓
Beach Towels	provided
Golf Driving Range	
Kayaks, canoes	
Tennis court	x2
Volleyball	✓
Yoga	✓

Sofitel Tahiti Resort is located on the west coast of Tahiti, on a charming beach surrounded by tropical gardens. The resort, recently renovated, features 216 stylish, light filled rooms, each with a private balcony and many with spectacular views over the mountains or across the lagoon toward the island of Moorea. Facilities include two excellent restaurants, a bar, two tennis courts, a golf driving range and a freshwater swimming pool.



S O F I T E L
LUXURY HOTELS



Location

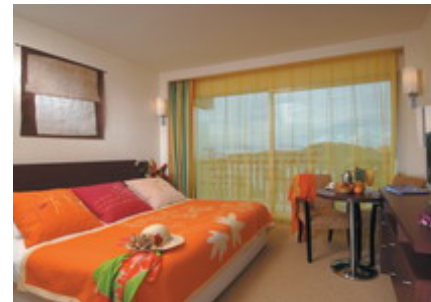
5 minutes from airport by bus

Credit Cards

Visa, Mastercard, American Express, Diners Club, JCB, Travellers Cheque

Services

103	Classic Mountain View Room	2010/2011
97	Superior Lagoon View Room	2010/2011
2	Superior Suite	2010/2011



Wedding and romance information

Honeymoon Gifts, Beach Candle light dinner, French touch...

Dining information

LE BOUGAINVILLE (Poolside - 180 seats):
International Cuisine
* Breakfast: 05:45am - 10:00am (buffet)
10:00am - 11:00am (à la carte)
* Lunch: 11:30am - 02:30pm
* Dinner: 06:30pm - 09:30pm

LE SAKURA (Mainfloor - 34 seats). Closed on Sunday and Monday.
Japanese Teppanyaki Cuisine
Dinner: 06:30pm - 09:30pm

Room Service: available from 06:00am to 10.00pm.

Theme Dinners with Polynesian show available.

Bars information

LE MOOREA (poolside - 40 seats):
Sunday to Thursday from 09:00am to 11:00pm
Friday and Saturday from 09:30am to midnight

Conferencing information

2 meeting rooms:
GAUGUIN meeting room: 120 m² (up to 100 pax)
PAEVAI meeting room: 150 m² (up to 200 pax)

More Information

Check-in: 02:00 PM
Check-out: 12.00 PM

* FACILITIES FOR THE DISABLED *
5 Superior Lagoon view rooms are accessible for clients on wheelchair



Terms of Trade (e.g. Deposit Policy, Cancellation Policy, Purchase Policy)

2010 (valid from April 01st) FIT CANCELLATION POLICY. For any cancellation received:

a) LOW SEASON (from April 01st to May 31st, 2010 & from November 01st, 2010 to March 31st, 2011):

* within 3 days : 1 night fee

* No show : 1 night fee

b) HIGH SEASON (from June 01st to October 31st, 2010):

* within 7 days : 2 nights fee

* No show : 2 nights fee

Early check-outs will be subject to a cancellation fee equal to 100% of the remaining nights.

Classic Mountain View Room

2009/2010

Interior: 22 m²

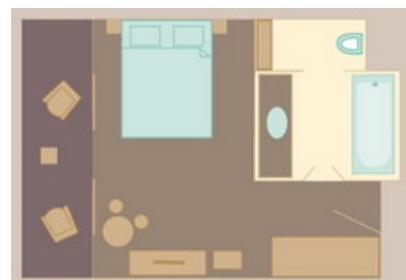
All Classic Mountain View Rooms have a private balcony overlooking the surrounding mountain side.

Bed Configuration: 1 King bed or 2 single beds

Occupancy Details

Max Number Of Adults: 2

Max Number Of Adults and Child(ren): 2



Superior Lagoon View Room

2008/2009

Room surface: 22 m²

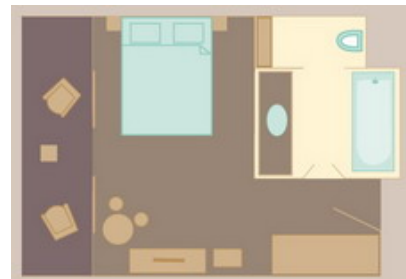
All Superior Lagoon View rooms have a private balcony and overlook the lagoon with a view of Moorea.

Bed Configuration: 1 King bed or 2 single beds

Occupancy Details

Max Number Of Adults: 2

Max Number Of Adults and Child(ren): 2



Superior Suite

2008/2009

Superior Suite surface: 44 m²

The 2 suites are on the 7th floor at the end of the building. They both have a panoramic view.

Bed Configuration: 1 King bed + 1 sofa bed

Occupancy Details

Max Number Of Adults: 2

Max Number Of Adults and Child(ren): 3

