

Tahiti, Society Islands

Set in lush gardens at Lafayette Beach, Radisson Plaza Resort Tahiti is the idyllic retreat. Located 7kms from town, this resort features 5 categories of deluxe accommodation with large balconies and stunning views of Matavai Bay. Guests will enjoy an all day waterfront restaurant, pool and terrace bar, state of the art spa and health club and a wide variety of free activities.



Location

20 minutes from airport by bus

Facilities	
Baby sitting	On Request
Beauty Salon	Jacques Dessange
Boutiques	incl. local art
Business Centre	✓
Electricity	220V-60Hz
Fitness Centre	✓
Ice machines	✓
Jacuzzi	✓
Laundry service	✓
Spa	✓
Swimming Pool	✓
Tour Desk	✓
Transit rooms	

Credit Cards

Visa, Mastercard, American Express, Diners Club, JCB, Travellers Cheque

Room Facilities	
Air Conditioning	✓
Bathtub	✓
Cable TV - Movie Channel	✓
Ceiling Fan	
Coffee / Tea Facilities	✓
Glass Bottom Table	
Hair Dryer	✓
Internet access	✓
Iron	✓
Mini Bar	✓

Services

16	Standard Ocean View Room	2010/2011
37	Deluxe Ocean View Room	2010/2011
38	Ocean View Jacuzzi Room	2010/2011
74	Ocean View Suite	2010/2011
27	Ocean View Duplex Suite	2010
*	Spa & Massages	2010/2011



Wedding and romance information

Spa & Massages, Candlelight dinner

More Information

Check in: 02:00pm
Check out: 11:00am

Dining information

HITI MAHANA (200 seats)
Polynesian, European & South East Asian Cuisine
* Breakfast: 06:30am to 10:30am
* Lunch: 12:00pm to 02:30pm
* Dinner: 07:00pm to 10:00pm

* FACILITIES FOR THE DISABLED *
3 Ocean View Room + 1 Ocean View Suite equipped for clients on wheelchair.

Terms of Trade(e.g. Deposit Policy, Cancellation Policy, Purchase Policy)

2010 FIT CANCELLATION POLICY (valid from April 01st). For any cancellation received :
* within 3 days: 1 night fee
* No Show: Full stay will be charged
Early Check-outs will be subject to a cancellation fee equal to 100% of the remaining nights.

Free Activities	
Aquagym	✓
Beach Towels	✓
Fitness Centre	Free classes available
Hamam	✓
Jacuzzi	✓
Sauna	✓
Snorkeling Equipment	✓
Tahitian dance lessons	✓
Yoga	✓

THE 5 SENS (20 seats)
Gourmet and Fusion Cuisine - Open Monday to Friday
* Dinner only: 07:00pm to 10:00pm

TERRACE BAR (Poolside):
Snack: from 10.30am to 10.00pm

Room Service: 06:00am to 10:00pm
Theme Dinners with Polynesian show available.

Bars information

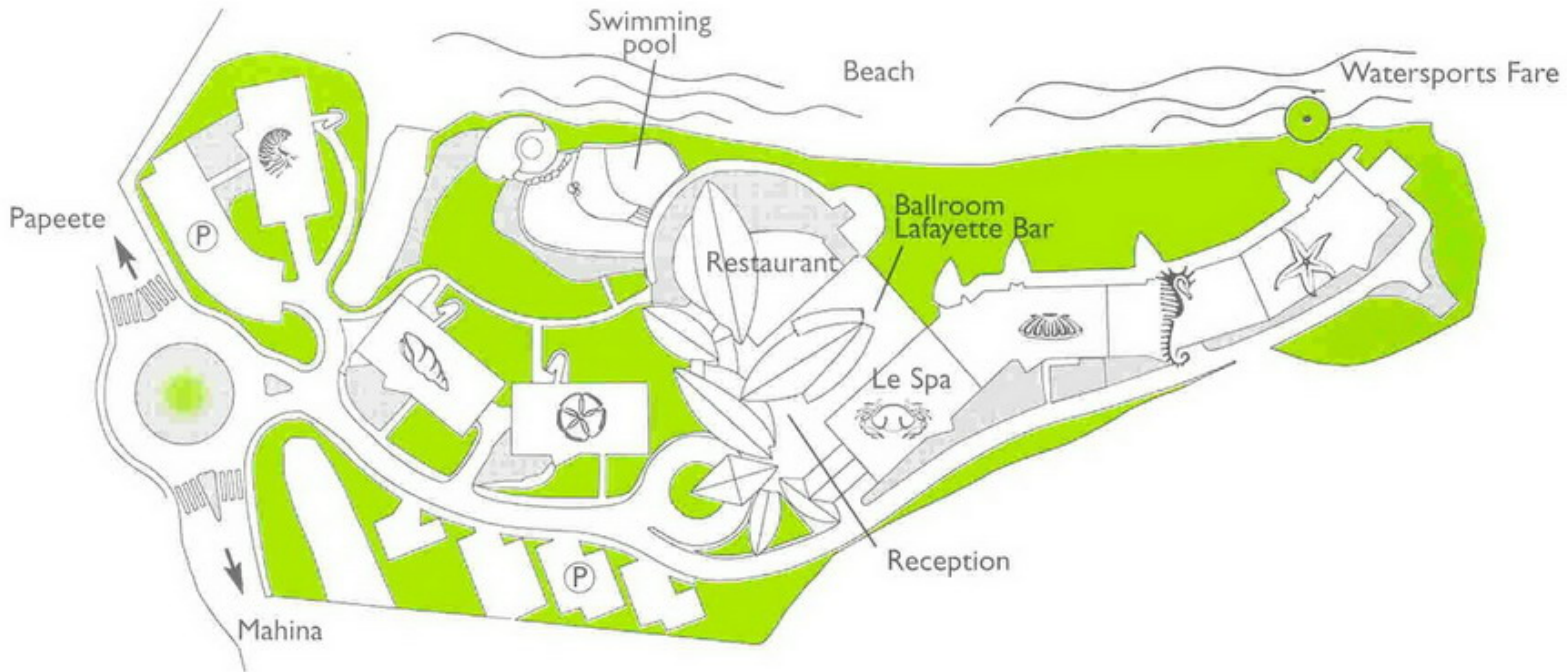
LAFAYETTE BAR: from 04:00pm to 11:00pm
125 seats

JAMES NORMAN HALL LOUNGE: from 7.00am to 4.00pm. 25 seats (only for hotel guests). Can be privatized for cocktails.

POOL BAR: from 10:30am to 10:00pm

Conferencing information

A ballroom with a capacity up to 600 guests (cocktail) and 4 meetings with a capacity from 30 to 120 persons (theatre style).



Standard Ocean View Room

2009/2010

Surface: 28,80 m²

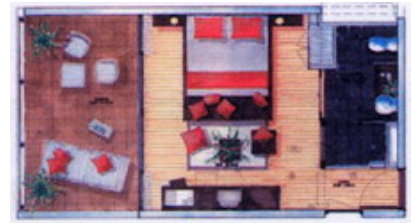
Nice Ocean View Rooms (first level) Overlooking Lafayette beach.

Bed Configuration: 1 King bed or 2 single beds

Occupancy Details

Max Number Of Adults: 2

Max Number Of Adults and Child(ren): 2



Deluxe Ocean View Room

2009/2010

Surface: 28,80 m²

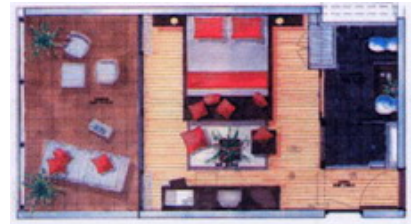
Nice Ocean View Rooms Overlooking Lafayette beach.

Bed Configuration: 1 King bed or 2 single beds

Occupancy Details

Max Number Of Adults: 2

Max Number Of Adults and Child(ren): 2



Ocean View Jacuzzi Room

2008/2009

Surface: 34.49 m²

These rooms overlook the Lafayette beach, with a private Jacuzzi located discreetly behind wooden louvres on the Lanai balcony.

Bed Configuration: 1 King bed or 2 single beds

Occupancy Details

Max Number Of Adults: 2

Max Number Of Adults and Child(ren): 2



Ocean View Suite

2008/2009

Surface: 56,60 m²

Superior comfort in two rooms with a lounge overlooking the beautiful bay. The bedroom has the choice of two single beds or one King bed. Walk through the bathroom with separate bath and shower.

Bed Configuration: 1 King bed + 1 sofa bed

Occupancy Details

Max Number Of Adults: 3

Max Number Of Adults and Child(ren): 4



Ocean View Duplex Suite

2008/2009

Surface : 55m²

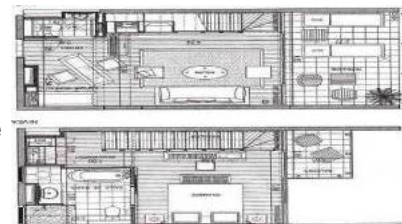
Two-storied duplex rooms with a business area and lounge downstairs opening on to the large Lanai balcony. The bedroom with King bed is upstairs with its own private balcony and floor to ceiling windows ensuring spectacular views of the sunset.

Bed Configuration: 1 King bed + 1 sofa bed

Occupancy Details

Max Number Of Adults: 3

Max Number Of Adults and Child(ren): 4



Spa & Massages

2008/2009

Discover the magic of Tahiti and indulge yourself in an elegant and relaxing atmosphere. Le Spa welcomes you for a unique experience of traditional Polynesian massages and beauty care.

Our exclusive home-made preparations are based on ancestral recipes using natural local ingredients such as indigenous fruit and flowers, Tahitian vanilla as well as mineral-rich black sand of Matavai Bay.

The Spa features:

* Equipment and facilities for duo-treatments:

- Duo massage treatments
- Duo bath rooms
- Duo Vichy shower

* Sauna

* Steam room

* Outdoor lounge terrace

* Ocean-view Fitness Center

* Fitness classes such as Yoga and aquagym



Occupancy Details

Max Number Of Adults: 999

Max Number Of Adults and Child(ren): 999