

## Tahiti, Society Islands

Facilities	
Baby sitting	On Request
Boutiques	<input checked="" type="checkbox"/>
Business Centre	<input checked="" type="checkbox"/>
Dive Centre	<input checked="" type="checkbox"/>
Electricity	220V-60Hz
Fitness Centre	
Ice machines	<input checked="" type="checkbox"/>
Laundry service	<input checked="" type="checkbox"/>
Swimming Pool	Sandy bottom pool
Tour Desk	Activities, car rental

Room Facilities	
Air Conditioning	<input checked="" type="checkbox"/>
Balcony	<input checked="" type="checkbox"/>
Bathrobes	<input checked="" type="checkbox"/>
Bathtub	<input checked="" type="checkbox"/>
Cable TV - Movie Channel	<input checked="" type="checkbox"/>
CD Player	<input checked="" type="checkbox"/>
Ceiling Fan	<input checked="" type="checkbox"/>
Coffee / Tea Facilities	<input checked="" type="checkbox"/>
Direct Access to Lagoon	
DVD Player	<input checked="" type="checkbox"/>
Glass Bottom Table	
Hair Dryer	<input checked="" type="checkbox"/>
Internet access	<input checked="" type="checkbox"/>
Mini Bar	<input checked="" type="checkbox"/>
Radio	<input checked="" type="checkbox"/>
Safety box	<input checked="" type="checkbox"/>
Shower	<input checked="" type="checkbox"/>
Telephone	<input checked="" type="checkbox"/>

Free Activities	
Aquagym	<input checked="" type="checkbox"/>
Beach Towels	provided
Kayaks, canoes	<input checked="" type="checkbox"/>
Petanque	<input checked="" type="checkbox"/>
Snorkeling Equipment	<input checked="" type="checkbox"/>
Tennis court	<input checked="" type="checkbox"/>
Tennis table	<input checked="" type="checkbox"/>
Volleyball	<input checked="" type="checkbox"/>

Situated in the heart of the Punaauia region, Le Méridien Tahiti overlooks white sand beaches, calming blue waves, and commanding mountains. The hotel offers four sophisticated meeting rooms, providing the largest conference and convention facilities in French Polynesia, a sandy-bottomed swimming pool, and a fusion of French and Polynesian cuisines at Le Carré.



*Le* **MERIDIEN**  
TAHITI



### Location

15 minutes from airport  
Paying Shuttle Bus to town available (to book at hotel reception)

### Credit Cards

Visa, Mastercard, American Express, Diners Club, JCB, Travellers Cheque

### Services

	25	Garden View Room	2010/2011
	77	Deluxe Lagoon View Room	2010/2011
	28	Panoramic Lagoon View Room	2010/2011
	12	Overwater Bungalow	2010/2011
	5	Junior Suite	2010/2011
	2	Senior Suite	2010/2011
	1	Presidential Suite	2010/2011
	*	Spa & Massages	2010/2011



### Wedding and romance information

Romantic Touches, Amenities, Wedding Ceremonies

### More Information

Check-in: 01:00pm  
Check-out: 11:00am

### Dining information

LA PLANTATION (Central - 250 seats) :  
Local & French Cuisine & Polynesian Buffets  
\* Breakfast 05.30am to 10.00am  
\* Dinner 07.00pm to 10.00pm

LE CARRE (Beachfront - 60 seats) :  
Fine Cuisine  
\* Lunch 12.00pm to 03.00pm  
\* Dinner 07.00pm to 10.00pm

Room Service available from 05:30am to 11:00pm. Theme Dinners with Polynesian show available.

\* FACILITIES FOR THE DISABLED \*  
1 Lagoon View Room + 2 Garden View rooms are accessible for clients on wheelchair.

### Terms of Trade(e.g. Deposit Policy, Cancellation Policy, Purchase Policy)

2010 FIT Cancellation Policy (valid from April 01st). For any cancellation received:  
\* within 7 days : 1 Night fee  
\* within 3 days : 2 Nights fee  
\* No Show : Full Stay charged, up to a maximum of 3 Nights  
\* Early Check-Outs will be subject to a cancellation fee equal to 100% of the remaining nights.

### Bars information

POOL BAR:  
10.00am to 10.30pm for the Bar  
11.00am to 06.00pm for the snack

ASTROLABE:  
04.00pm to 12.00am

### Conferencing information

The hotel can accommodate up to 450 persons - 3 Conference Rooms with all A/V equipment



## Garden View Room

2008/2009

Interior: 48 m<sup>2</sup>

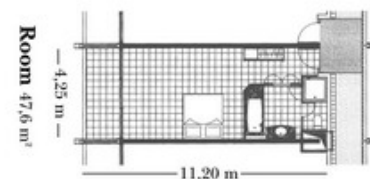
Garden Rooms look directly over the tropical gardens of the resort. Each unit features a terrace.

Bed Configuration: 1 King bed + 1 rollaway bed or 2 double beds or 2 single beds + 1 rollaway bed

### Occupancy Details

Max Number Of Adults: 3

Max Number Of Adults and Child(ren): 4



## Deluxe Lagoon View Room

2009/2010

Interior: 48 m<sup>2</sup>

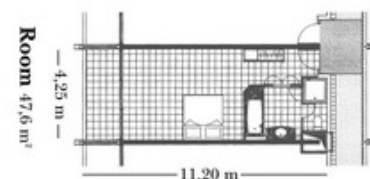
These units look directly over the blue lagoon of Tahiti. They all have a private terrace.

Bed Configuration: 1 King bed + 1 rollaway bed or 2 double beds or 2 single beds + 1 rollaway bed

### Occupancy Details

Max Number Of Adults: 3

Max Number Of Adults and Child(ren): 4



## Panoramic Lagoon View Room

2009/2010

Interior: 48 m<sup>2</sup>

They look directly over the blue lagoon of Tahiti. They are located at the top floors of the resort. Max 3 adults

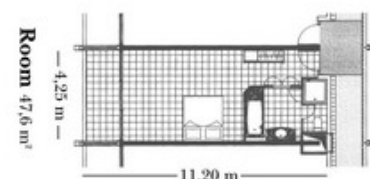
This category includes special amenities and services, including: Free internet access and city shuttle use during the stay, fruit plate and mineral water upon the arrival.

Bed Configuration: 1 King bed + 1 rollaway bed or 2 single beds + 1 rollaway bed

### Occupancy Details

Max Number Of Adults: 3

Max Number Of Adults and Child(ren): 3



### Overwater Bungalow

2008/2009

Interior: 56 m<sup>2</sup>

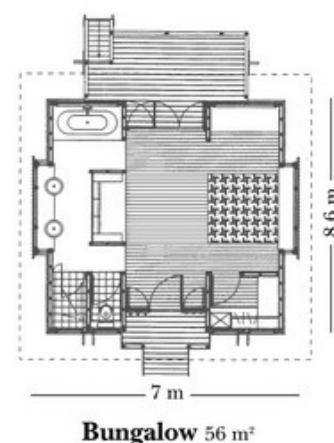
Stretching into the lagoon itself, the Overwater Bungalows perch right over the water. The bungalows have spacious deck for whiling away the hours over the lagoon. The interior decoration has been changed and highlights nice and refined colours with modern touches and equipment.

Bed Configuration: 1 King bed + 1 sofa bed

#### Occupancy Details

Max Number Of Adults: 3

Max Number Of Adults and Child(ren): 3



### Junior Suite

2008/2009

Interior: 83,6 m<sup>2</sup>

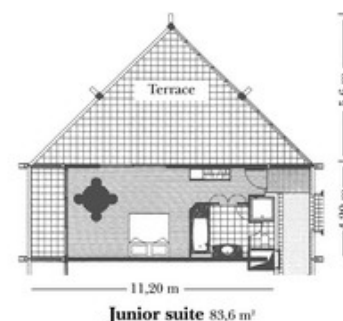
Spacious room with a large terrace offering a beautiful view on the tropical garden.

Bed Configuration: 1 King bed + 1 sofa bed

#### Occupancy Details

Max Number Of Adults: 3

Max Number Of Adults and Child(ren): 3



### Senior Suite

2008/2009

Interior: 131 m<sup>2</sup>

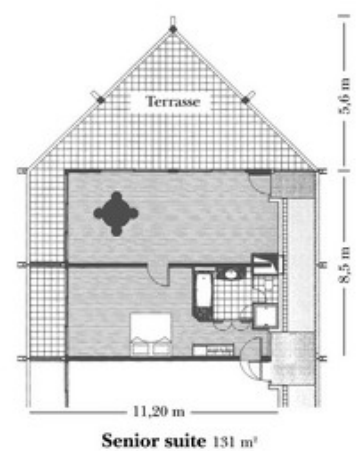
The 2 Senior Suites have a huge terrace and a separate living room. The Suites benefit from DVD players.

Bed Configuration: 1 King bed + 1 sofa bed

#### Occupancy Details

Max Number Of Adults: 3

Max Number Of Adults and Child(ren): 4



### Presidential Suite

2008/2009

Interior: 179 m<sup>2</sup>

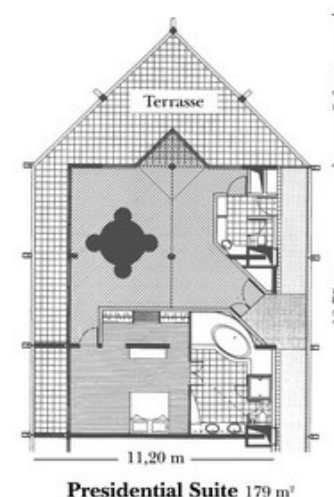
Located on the top floor of the hotel, the Presidential Suite looks directly over the blue lagoon of Tahiti. It is very spacious with its huge terrace. This suite offers a bedroom and a separate living room.

Bed Configuration: 1 King bed + 1 sofa bed

#### Occupancy Details

Max Number Of Adults: 3

Max Number Of Adults and Child(ren): 4



---

**Spa & Massages**

2008/2009

Le Meridien Tahiti offers a few massages from the traditional Polynesian "taurumi" to the Shiatsu or Ayurvedic massages.

**Occupancy Details**

Max Number Of Adults: 999

Max Number Of Adults and Child(ren): 999

