

Moorea, Society Islands

The Hotel Kaveka, pleasant budget standard establishment, is located in one of the nicest bay in Polynesia: The Cook's Bay. It is a family owned hotel with traditional Tahitian bungalow accommodation.



Location

20 minutes from airport by bus

Credit Cards

Visa, Mastercard, American Express, Diners Club, JCB, Travellers Cheque

Facilities	
Baby sitting	On Request
Boutiques	
Business Centre	✓
Dive Centre	✓
Electricity	220V
Helipad	
Ice machines	✓
Laundry service	✓
Swimming Pool	
Room Facilities	
Air Conditioning	✓
Bathtub	
CD Player	
Ceiling Fan	✓
Coffee / Tea Facilities	
Direct Access to Lagoon	
Equipped Kitchen	
Glass Bottom Table	
Hair Dryer	
Internet access	✓
Radio	
Refrigerator	On Request
Safety box	✓
Shower	✓
Telephone	
TV	
Free Activities	
Beach Towels	
Bicycles	✓
Fitness Centre	
Kayaks, canoes	✓
Petanque	✓
Snorkeling Equipment	(no fins)
Tennis court	
Volleyball	

Services

	12	Lanai Bungalow	2010/2011
	7	Air Conditioned Garden Bungalow	2010/2011
	4	Air Conditioned Family Garden Bungalow	2010/2011
	5	Air Conditioned Lagoon Bungalow	2010/2011
	1	Air Conditioned Family Lagoon Bungalow	2010/2011
	2	Air Conditioned Beach Bungalow	2010/2011



Dining information

LE KAVEKA RESTAURANT (seaside - 80 seats):
 French, International & Polynesian Cuisine
 * Breakfast: 06:30am to 09:00am
 * Lunch: 11:30am to 01:30pm
 * Dinner: 06:30pm to 09:30pm

Room Service: not available.

Bars information

BAR LE KAVEKA : 09:00am to 03:30pm & 05:30pm to 09:30pm

Conferencing information

Conference Room available.

More Information

Check-in: 12:00 pm
 Check-out: 10:00 am

* FACILITIES FOR THE DISABLED *
 Difficult access for clients on wheelchair.

Terms of Trade(e.g. Deposit Policy, Cancellation Policy, Purchase Policy)

2010 FIT Cancellation Policy (valid from January 01st). For any cancellations received:
 * within 7 days before arrival: up to 3 nights fee
 * No show: up to 3 nights fee
 * Early check-outs will be subject to a cancellation fee equal to 100% of the remaining nights.

Lanai Bungalow

2009/2010

Lanai Bungalow

Bed Configuration: 1 double bed + 1 single bed

Occupancy Details

Max Number Of Adults: 3

Max Number Of Adults and Child(ren): 3



Air Conditioned Garden Bungalow

2008/2009

Bed Configuration: 1 Double bed + 1 Single bed

The 8 Garden Bungalows are situated in the center of the garden.

Bed Configuration: None Specified

Occupancy Details

Max Number Of Adults: 3

Max Number Of Adults and Child(ren): 3



Air Conditioned Family Garden Bungalow

2009/2010

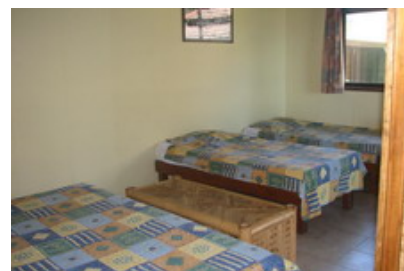
Air Conditioned Family Garden Bungalow

Bed Configuration: 1 double bed + 2 single beds

Occupancy Details

Max Number Of Adults: 5

Max Number Of Adults and Child(ren): 5



Air Conditioned Lagoon Bungalow

2008/2009

Bed Configuration: 1 Double bed + 1 Single bed

These units are located on the main land, close to a white sand beach, just in front of the lagoon, from where one can have a panoramic view of the Cook's Bay.

Bed Configuration: None Specified

Occupancy Details

Max Number Of Adults: 3

Max Number Of Adults and Child(ren): 3



Air Conditioned Family Lagoon Bungalow

2009/2010

Air Conditioned Family Lagoon Bungalow

Bed Configuration: 1 double bed + 2 single beds

Occupancy Details

Max Number Of Adults: 5

Max Number Of Adults and Child(ren): 5



Air Conditioned Beach Bungalow

2008/2009

Bed Configuration: 1 Double bed + 1 Single bed

These 2 units are just 5 meters from the white sand beach.
A good quality bungalow for a low budget.

Bed Configuration: None Specified

Occupancy Details

Max Number Of Adults: 3

Max Number Of Adults and Child(ren): 3

