

## Bora Bora, Society Islands

Hotel le Meridien Bora Bora is located on the southern tip of a motu (islet over coral reef) facing the main island of Bora Bora with an unsurpassed view of Otemanu Mount. The hotel is only 20 minutes by private launch from the airport and five minutes by boat from the main island.



Location

20 minutes from airport by boat. Free shuttle from the hotel to Anau (base on the main island) following a timetable

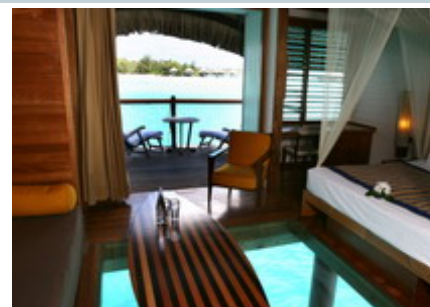
### Credit Cards

Visa, Mastercard, American Express, Diners Club, JCB, Travellers Cheque

Facilities	
Baby bed	✓
Baby sitting	On Request
Boutiques	✓
Business Centre	
Dive Centre	✓
Fitness Centre	
Helipad	✓
Ice machines	✓
Infinity Pool	✓
Laundry service	✓
Transit rooms	✓
Room Facilities	
Air Conditioning	✓
Bathtub	✓
Cable TV - Movie Channel	✓
CD Player	✓
Ceiling Fan	✓
Coffee / Tea Facilities	✓
Direct Access to Lagoon	Overwater bungalows
DVD Player	✓
Glass Floor	Overwater bungalows
Hair Dryer	✓
Internet access	✓
Mini Bar	✓
Private Jacuzzi	
Private pool	
Safety box	✓
Shower	✓
Telephone	✓
Free Activities	
Beach Towels	✓
Kayaks, canoes	✓
Lagoon Tour	✓
Outrigger canoe	✓
Pedal Boat	✓
Petanque	✓
Snorkeling Equipment	✓
Tennis table	✓
Turtle's sanctuary	✓
Volleyball	✓
Windsurfing	✓

### Services

3	Lagoon Bungalow	2010/2011
6	Beach Bungalow	2010/2011
59	Overwater Bungalow	2010/2011
22	Premium Overwater Bungalow	2010/2011
4	Beach Suite with Pool	2010/2011
4	Beach Villa with Pool	2010/2011
*	Spa & Massages	2010/2011



### Wedding and romance information

Romantic Touches, Wellness Centre, Polynesian Wedding Ceremonies

### Bars information

LE MIKI MIKI: 03.00pm to 11.00pm

### Dining information

LE TIPANIE (Lagoon side - 90 seats) : Gourmet Cuisine & International Buffets - opened everyday  
 \* Breakfast: 07.00am to 10.00am  
 \* Dinner: 07.00pm to 09.30pm (à la carte) / 06.30pm to 09.30pm (buffet)

### More Information

Check-in: 01:00pm  
 Check-out: 11:00am

LE TE AVA (Pool side - 70 seats) : Buffet & "A la carte"  
 \* Lunch 11.30am to 03.00pm  
 \* Dinner 03.30pm to 09.30pm

\* FACILITIES FOR THE DISABLED \*  
 3 Bungalows are accessible for clients on wheelchair

FARE TUPA (On the beach - 20 seats) : Sandwiches, fresh drinks, ice cream  
 \* Continental Breakfast 10.00 to 11.30am  
 \* Snack 10.30 to 05.00pm

Theme Dinners with Polynesian show available.

Room Service: Available 24 hours a day

### Terms of Trade (e.g. Deposit Policy, Cancellation Policy, Purchase Policy)

2010 (valid from April 01st) FIT CANCELLATION POLICY, for any cancellation received :

- \* within 7 days : 1 Night fee
- \* within 3 days : 2 Nights fee
- \* No Show : Full stay charged, up to a maximum of 3 nights
- \* Early Check-Outs will be subject to a cancellation fee equal to 100% of the remaining nights.

### CHRISTMAS & NEW YEAR SEASON:

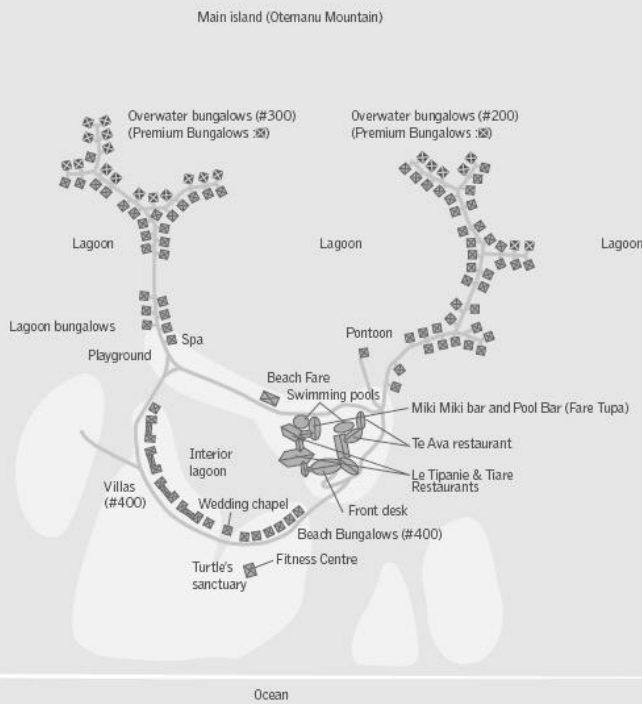
Special Conditions - from December 24th, 2010 to January 06th, 2011

before Dec 15th: Full prepayment required (Accommodation & Dinner 31 Dec)

For any cancellation or modification received:

before Dec 15th: Regular Cancellation Policy applies  
by Dec 15th & onwards: 50% Fee (Accommodation & Dinner 31 Dec)

No Show: 100% Fee (Accommodation & Dinner 31 Dec)



## Lagoon Bungalow

2008/2009

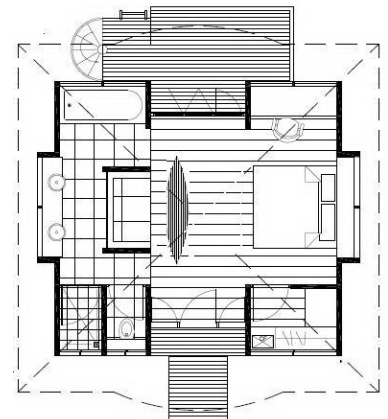
Lagoon Bungalow

Bed Configuration: 1 King bed + 1 sofa bed or 2 single beds + 1 sofa bed

### Occupancy Details

Max Number Of Adults: 3

Max Number Of Adults and Child(ren): 3



## Beach Bungalow

2008/2009

Room surface: 60 m<sup>2</sup>

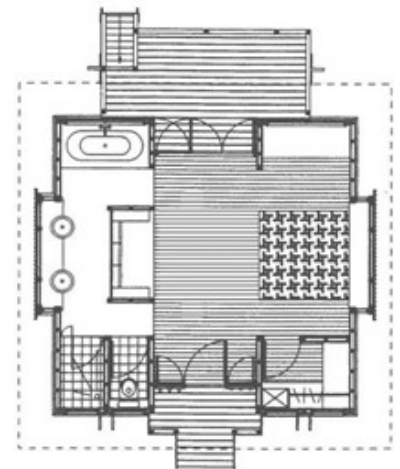
Beach bungalows are located directly along the private lagoon. These bungalows have a private beach complimented with a double hammock and sun beds. They are surrounded by trees and a lush vegetation. Ideal for families.

Bed Configuration: 1 King bed + 1 sofa bed or 2 single beds + 1 sofa bed

### Occupancy Details

Max Number Of Adults: 3

Max Number Of Adults and Child(ren): 3



#### Overwater Bungalow

2008/2009

Room surface: 60 m<sup>2</sup>

Water around is 1 to 3 m deep.

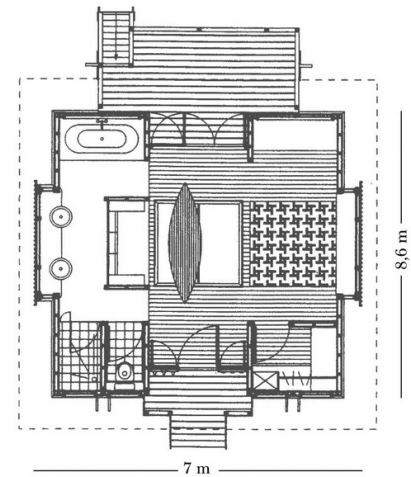
With an unbelievable view of the Otemanu Mount and the lagoon, the overwater bungalows were built in appreciation of the environment and the ecosystem. Each unit has a large section of glass on the floor to provide endless appreciation of nature whilst sunlight beams through the clear blue sea reflecting natural light into the room. Ladders from the deck make it easy to slip into the lagoon's clear water for a swim.

Bed Configuration: None Specified

#### Occupancy Details

Max Number Of Adults: 3

Max Number Of Adults and Child(ren): 3



#### Premium Overwater Bungalow

2008/2009

Room surface: 60 m<sup>2</sup>

Water around is 4 to 6 m deep

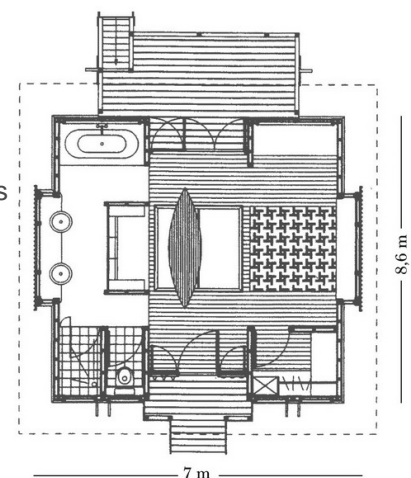
The Premium Overwater Bungalows feature same amenities as the overwater bungalows and are located in the most romantic and quiet location, with a breathtaking view of the Otemanu Mount. Guests are able to enjoy watching the beautiful sunset. In a word they benefit from the best locations in deep waters.

Bed Configuration: None Specified

#### Occupancy Details

Max Number Of Adults: 3

Max Number Of Adults and Child(ren): 3



#### Beach Suite with Pool

2009/2010

The Beach Suite with Pool offer the same characteristics as the Beach Bungalows but with a larger terrace as well as a private Jacuzzi & swimming pool. They are located along the private interior lagoon.

These bungalows are the same units as the Beach Villas except that they only include 1 room and a living room (the Villas including 2 rooms and a living room).

Detailed Bed Configuration:

1 Bedroom with 1 Double bed + 1 Sofa Bed (single)

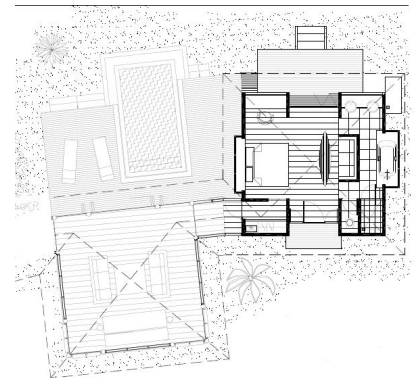
Living Room: 1 Sofa Bed (double)

Bed Configuration: 1 double bed + 2 Sofa beds

#### Occupancy Details

Max Number Of Adults: 3

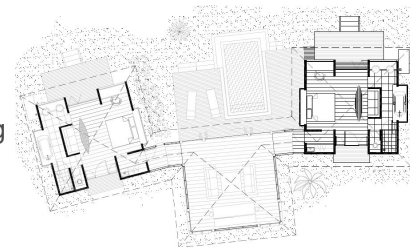
Max Number Of Adults and Child(ren): 5



### Beach Villa with Pool

2009/2010

The Beach Villa with Pool is ideal for families or couples of friends. They feature 2 separate bedrooms, a large living room overlooking a private terrace with Jacuzzi & swimming pool. Located a few steps from the turtle sanctuary, these villas are also along hotel's interior lagoon.



These bungalows are the units as the Beach Suites except that the Villas include 2 rooms and a living (the Beach Suite including only one room and a living room).

Detailed Bed configuration:

Bedroom 1: 1 Double bed + 1 Sofa Bed (single)

Bedroom 2: 1 Double bed + 1 Sofa Bed (single)

Living room: 1 Sofa Bed (double)

Bed Configuration: None Specified

### Occupancy Details

Max Number Of Adults: 4

Max Number Of Adults and Child(ren): 8

### Spa & Massages

2008/2009

Le Meridien Bora Bora "Wellness Fare" offers a wide range of different cares from traditional Polynesian massages to exotic treatments.

### Occupancy Details

Max Number Of Adults: 999

Max Number Of Adults and Child(ren): 999

