

Bora Bora, Society Islands

Facilities	
Baby bed	On Request
Boutiques	✓
Business Centre	✓
Electricity	220V-60Hz
Fitness Centre	✓
Helipad	✓
Ice machines	✓
Internet access	WI FI
Laundry service	✓
Spa	✓
Swimming Pool	infinity edge pool
Room Facilities	
Air Conditioning	✓
Bathrobes	✓
Bathtub	✓
CD Player	✓
Ceiling Fan	✓
Coffee / Tea Facilities	✓
DVD Player	✓
Hair Dryer	✓
Internet access	WI FI
Iron	✓
Mini Bar	✓
Private pool	units with private pool only
Refrigerator	✓
Safety box	✓
Shower	✓
Telephone	✓
TV	✓
Free Activities	
Beach Towels	✓
Fitness Centre	✓
Kayaks, canoes	✓
Library	✓
Snorkeling Equipment	✓
Tennis court	✓
Windsurfing	✓

On this mystical island with its necklace of white-fringed coral islets, Four Seasons Resort Bora Bora elevates the excitement to redefine South Seas escape. Exotic over-water suites, and sprawling beachfront villas with pools, immerse you in ultramodern comforts and the warm and welcoming spirit of French Polynesia.



Location

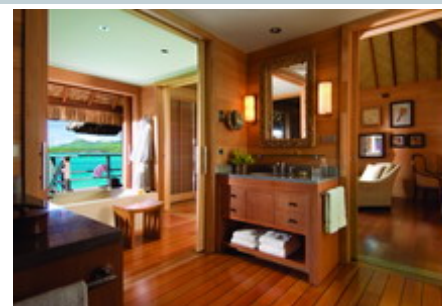
15 minutes from airport by private boat.

Credit Cards

Visa, Mastercard, American Express, Diners Club, JCB, Travellers Cheque

Services

8	Resort View Overwater Bungalow	2010/2011
20	Beach View Overwater Bungalow	2010/2011
26	Lagoon View Overwater Bungalow	2010/2011
38	Mountain View Overwater Bungalow	2010/2011
4	Overwater Bungalow with pool	2010/2011
4	Otemanu View Overwater Bungalow with pool	2010/2011
2	2-Bedroom Beachfront Villa with pool	2010/2011
4	2-Bedroom Premium Beachfront Villa with pool	2010/2011
1	3-Bedroom Otemanu Presidential Villa with pool	2010/2011



Wedding and romance information

Romantic touches & Wedding Ceremonies. The resort features a Wedding Chapel overlooking the lagoon.

Dining information

* ARII MOANA RESTAURANT (56 seats indoor/40 seats outdoor) - an elegant space overlooking Bora Bora lagoon with dramatic views of Mt. Otemanu and serving French delicacies and fresh seafood specialities. Opened for dinner only.

* TERE NUI RESTAURANT (107 seats) - features warm tropical breeze and modern Polynesian cuisine. Open daily for breakfast, lunch & dinner. 24-hour Room Service.

Bars information

* FARE HOA - Beach Bar overlooking the resort's wave-shaped pool and beach. Opened daily from 10:00am to 05:00pm for light snacks, lunch & beverages.

* SUNSET BAR (61 seats indoor) - a quiet place to relax, indoors or out, to sip a cocktail overlooking the turquoise lagoon and watch the sunset. Opened from 05:00pm to 10:30pm.

Conferencing information

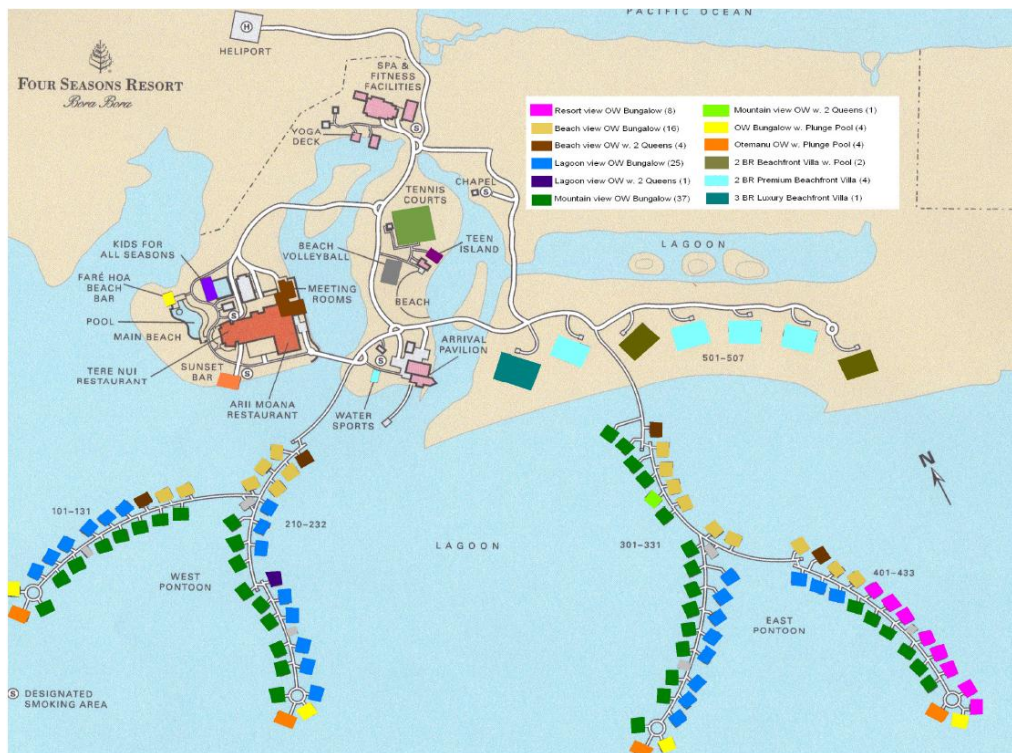
Banquet & Meeting Space available.

More Information

Check-in: 02.00pm. Check-out: 11.00am.

* FACILITIES FOR THE DISABLED *
A few units are adapted for clients on wheelchair.

* CHILDREN PROGRAM *
Complimentary Kids All Seasons program ("Teen Island" and "Kids Island") & Kids pool.



Terms of Trade (e.g. Deposit Policy, Cancellation Policy, Purchase Policy)

2010 FIT Cancellation Policy (valid from April 01st). For any cancellation or modification received :

a) for Resort View, Beach view, Mountain view and Lagoon view Overwater bungalows only - within 14 days: 2 nights fee.

b) for all other room categories (categories with pools, except the 3-bedroom villa) - within 29 days: 2 nights fee.

c) for the 3-bedroom Otemanu Presidential Villa:

Full prepayment applies to this category

- A deposit of 50% is required to confirm the reservation
- Balance due at the latest 60 days prior to arrival
- In case of full or partial cancellation occurs more than 60 days before arrival: no penalty
- In case of full cancellation within 60 days: 100% cancellation fee
- In case of partial cancellation within 60 days: all cancelled nights will be due to the hotel

d) Early check-out (for all categories): subject to a cancellation fee equal to 100% of the remaining nights of the reserved stay.

e) No Show (for all categories): full stay charged. Guest that "no show" and arrive unscheduled on days following, will still be charged no-show fees.

FESTIVE SEASON 2010 : from December 23rd, 2010 to January 04th, 2011.

a) Minimum stay required, according to date of check-in:

- * Check-in on 26, 27, or 28 Dec: 7 nights minimum stay
- * Check-in on 29 Dec: 5 nights minimum stay
- * Check-in on 30 Dec: 4 nights minimum stay
- * Check-in on 31 Dec: 3 nights minimum stay

b) Payment policy & Cancellation policy:

- * 50% deposit upon reservation confirmation
- * Final payment due by October 05th, 2010
- * 60 days or less prior to arrival: any reduction of room nights will be charged in full
- * 100% Cancellation Penalty once reservation is fully paid

Note : Specific conditions will apply to the 3-Bedroom Otemanu Luxury Beachfront Villa with pool. TBA

Resort View Overwater Bungalow

2009/2010

Surface : 100 m²

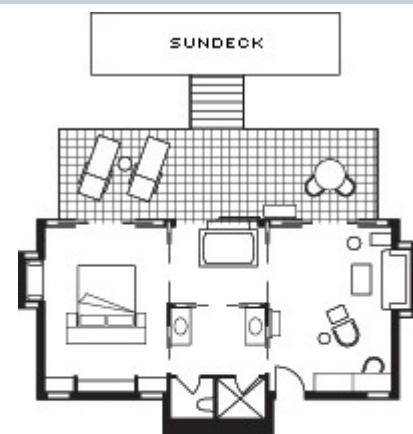
Resort-View Over-Water Bungalows offer the complete Polynesian lagoon experience, with views of the Resort. These one-bedroom units feature a spacious living room that opens onto a deck furnished with two chaises longues – perfect for entertaining.

Bed Configuration: 1 King bed + 1 sofa bed

Occupancy Details

Max Number Of Adults: 3

Max Number Of Adults and Child(ren): 4



Beach View Overwater Bungalow

2009/2010

Bungalow surface: 100m²

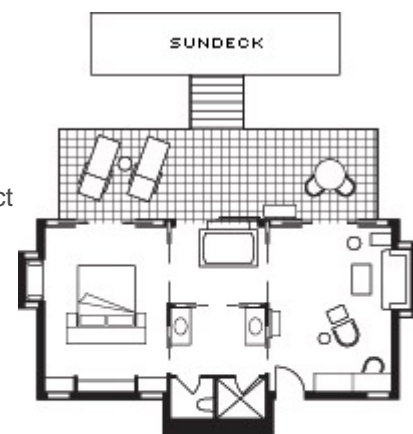
Beach View Over-Water Bungalows offer the complete Polynesian lagoon experience, with views of the Resort's white-sand beach. These one-bedroom units feature a spacious living room that opens onto a deck furnished with two chaises longues – perfect for entertaining.

Bed Configuration: 1 King bed + 1 sofa bed or 2 Queen + 1 Sofa bed

Occupancy Details

Max Number Of Adults: 3

Max Number Of Adults and Child(ren): 4



Lagoon View Overwater Bungalow

2009/2010

Bungalow surface: 100 m²

Lagoon View Over-Water Bungalows offer unobstructed views of the pristine lagoon, for the complete Polynesian lagoon experience. Ideal for families and entertaining, the spacious living rooms of these one-bedroom units open onto a deck furnished with two chaises longues.

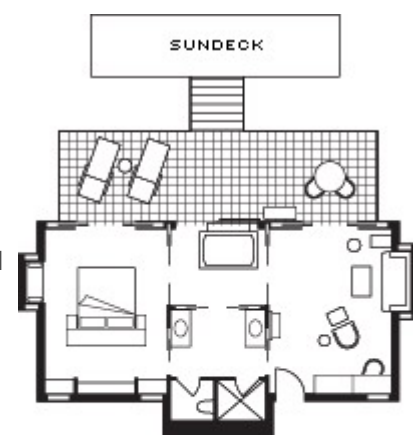
The bathroom, which opens onto a wooden deck, features a double vanity, an oversized tub and a separate shower.

Bed Configuration: 1 King bed + 1 sofa bed or 2 Queen + 1 Sofa bed

Occupancy Details

Max Number Of Adults: 3

Max Number Of Adults and Child(ren): 4



Mountain View Overwater Bungalow

2009/2010

Bungalow surface: 100m²

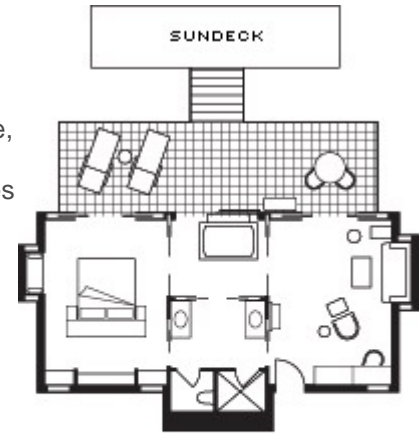
Mountain View Over-Water Bungalows offer the complete Polynesian lagoon experience, with views of majestic Mount Otemanu. Ideal for families, these one-bedroom units feature a spacious living room that opens onto a deck furnished with two chaises longues – perfect for entertaining.

Bed Configuration: 1 King bed + 1 sofa bed or 2 Queen + 1 Sofa bed

Occupancy Details

Max Number Of Adults: 3

Max Number Of Adults and Child(ren): 4



Overwater Bungalow with pool

2008/2009

Bungalow surface: 104 m²

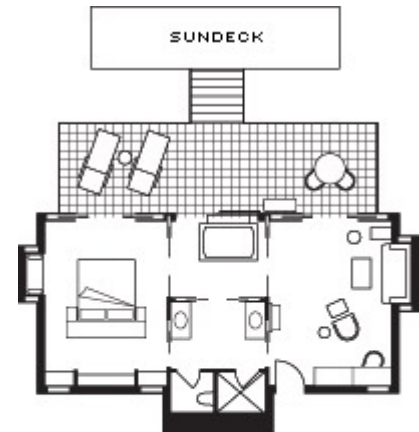
One-bedroom Lagoon View Over-Water Bungalows with Plunge Pool offer the complete Polynesian lagoon experience. A spacious living room opens onto a deck that is perfect for entertaining, while the bedroom has access to a private plunge pool. The bathroom includes a double vanity, an oversized tub and a separate shower.

Bed Configuration: 1 King bed + 1 sofa bed

Occupancy Details

Max Number Of Adults: 3

Max Number Of Adults and Child(ren): 4



Otemanu View Overwater Bungalow with pool

2008/2009

Bungalow surface: 147 m²

Expansive one-bedroom Otemanu Over-Water Bungalows with Plunge Pool offer the finest Polynesian over-water experience. Perfect for privacy and relaxation, the spacious living room opens onto a deck that is ideal for entertaining, while the bedroom has access to a private plunge pool.

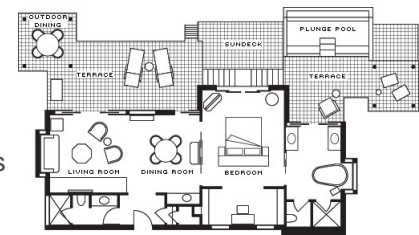
The bathroom includes double vanities, an oversized tub, and a separate shower; A guest bathroom with shower is located off the living area.

Bed Configuration: 1 King bed + 1 sofa bed

Occupancy Details

Max Number Of Adults: 3

Max Number Of Adults and Child(ren): 4



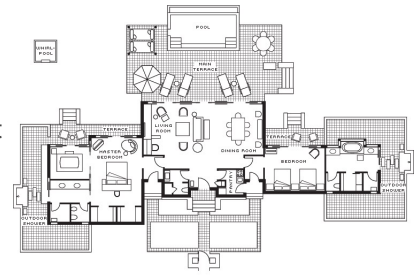
2-Bedroom Beachfront Villa with pool

2009/2010

Bungalow surface: 300 m²

These villas feature a large entrance foyer, a living room with seating for six, an adjacent dining room for up to six guests, and a small pantry. They have a view on the garden of the property and the lagoon.

The master bedroom offers a king bed, an ensuite bathroom with lovely garden views, and a large private deck, with its own whirlpool nestling in the garden. The second bedroom has two queen beds, and garden views from its bathroom. All full bathrooms include a double vanity, an oversized tub and a separate shower. A guest bathroom with shower is located off the living area.



Bed Configuration: 1 King bed + 2 Queen beds + 1 Sofa bed

Occupancy Details

Max Number Of Adults: 7

Max Number Of Adults and Child(ren): 8

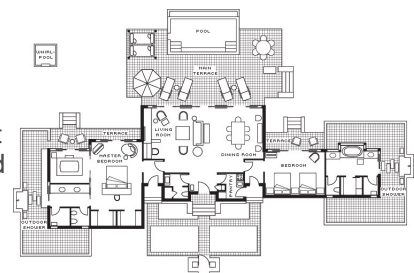
2-Bedroom Premium Beachfront Villa with pool

2009/2010

Surface : 300 m²

These villas feature a large entrance foyer, a living room with seating for six, an adjacent dining room for up to six guests, and a small pantry. They have a view on the lagoon and mount Otemanu.

The master bedroom offers a king bed, an ensuite bathroom with lovely garden views, and a large private deck, with its own whirlpool nestling in the garden. The second bedroom has two queen beds and garden views from its bathroom. All full bathrooms include a double vanity, an oversized tub and a separate shower. A guest bathroom with shower is located off the living area.



Bed Configuration: 1 King bed or 2 Queen beds

Occupancy Details

Max Number Of Adults: 7

Max Number Of Adults and Child(ren): 8

3-Bedroom Otemanu Presidential Villa with pool

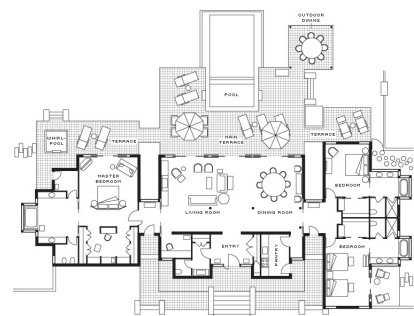
2008/2009

Bungalow surface: 500 m²

The one-of-a-kind Otemanu Luxury Beachfront Villa is perfect for families and groups, with its three bedrooms, four bathrooms and private swimming pool. Located on a white-sand beach and surrounded by tropical foliage, this unique villa is naturally secluded, offering unmatched sunset views, as well as countless opportunities for outdoor dining and casual relaxation.

The outdoor area encompasses 93 square metres (1,000 square feet) of expansive decks and shaded lanais, with spectacular views of the crystalline lagoon and Mount Otemanu. Indoors, the villa features a spacious entrance foyer, an expansive living room with seating for seven, a plasma screen television, an adjacent dining room with seating for eight, and a large pantry.

The master bedroom offers a king bed, a plasma screen television, an ensuite bathroom with lovely garden views, and a large private deck, with its own whirlpool nestling in the garden. The second and third bedrooms are located on the opposite side of the villa; each has its own bathroom featuring garden views and a personal patio for lounging and outdoor dining.



Bed Configuration: 2 King bed + 2 Queen beds

Occupancy Details

Max Number Of Adults: 8

Max Number Of Adults and Child(ren): 8